

# Average daily expenditure

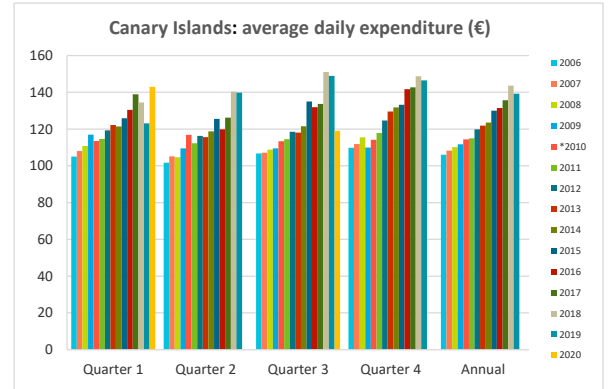
## By island of stay



### Average daily expenditure (€)

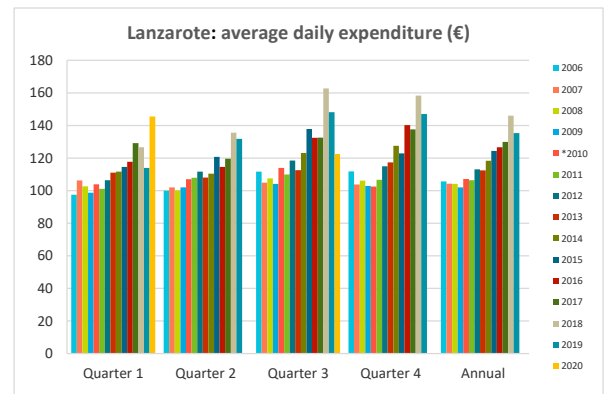
#### CANARY ISLANDS

	Quarter 1	Quarter 2	Quarter 3	Quarter 4	Annual
2006	105.0	101.7	106.7	109.9	106.0
2007	108.1	105.1	107.2	111.8	108.3
2008	110.8	104.7	108.8	115.6	110.2
2009	117.0	109.5	109.5	110.0	111.7
*2010	113.5	116.9	113.4	114.2	114.4
2011	114.7	112.3	114.5	117.9	115.0
2012	119.3	116.3	118.5	124.6	119.9
2013	122.2	115.6	118.1	129.5	121.9
2014	121.4	118.8	121.6	131.8	123.6
2015	125.9	125.5	135.0	133.2	130.0
2016	130.5	119.9	132.0	141.7	131.4
2017	138.9	126.2	133.7	142.7	135.7
2018	134.5	140.3	151.1	148.7	143.6
2019	123.1	139.8	148.9	146.5	139.2
2020	142.9		119.1		



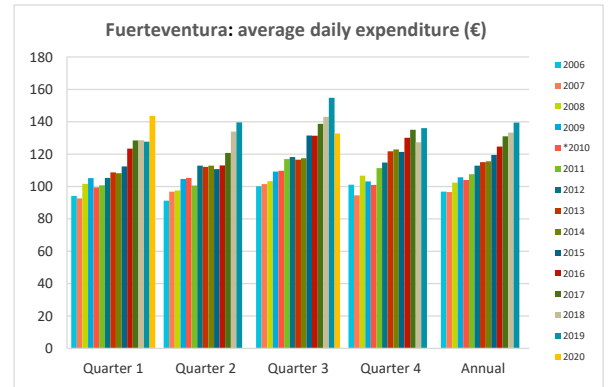
#### LANZAROTE

	Quarter 1	Quarter 2	Quarter 3	Quarter 4	Annual
2006	97.5	100.0	111.7	111.8	105.6
2007	106.3	102.0	104.9	103.8	104.3
2008	102.6	100.1	107.5	106.1	104.1
2009	98.7	102.1	104.2	102.8	102.0
*2010	103.9	107.1	113.9	102.6	107.1
2011	101.1	107.9	110.0	106.7	106.4
2012	106.4	111.7	118.5	114.9	113.0
2013	111.0	108.0	112.6	117.4	112.4
2014	111.7	110.4	123.2	127.5	118.3
2015	114.6	120.8	137.8	122.9	124.4
2016	117.7	114.6	132.4	140.2	126.6
2017	129.2	119.6	132.5	137.6	130.0
2018	126.6	135.6	162.7	158.3	146.0
2019	113.9	131.8	148.1	147.0	135.3
2020	145.5		122.5		



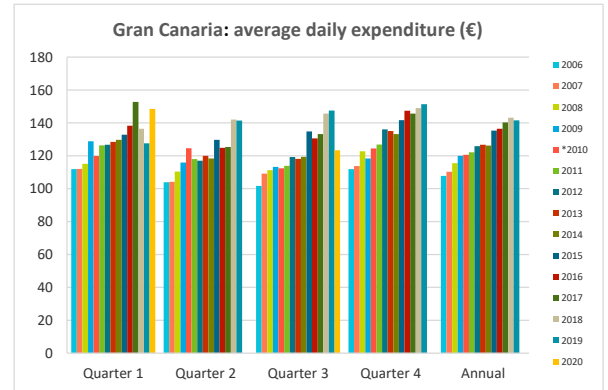
#### FUERTEVENTURA

	Quarter 1	Quarter 2	Quarter 3	Quarter 4	Annual
2006	94.2	91.2	100.1	101.1	96.9
2007	92.6	96.8	101.4	94.6	96.5
2008	101.6	97.6	103.3	106.7	102.4
2009	105.2	104.6	109.2	103.1	105.6
*2010	99.5	105.3	109.8	101.0	104.1
2011	100.8	100.7	116.9	111.4	107.6
2012	105.3	112.9	118.2	114.8	112.9
2013	108.7	112.2	116.5	121.7	115.1
2014	108.3	112.9	117.4	122.9	115.6
2015	112.4	110.7	131.4	121.3	119.5
2016	123.4	113.0	131.3	130.0	124.6
2017	128.5	120.8	138.7	135.0	131.0
2018	128.5	133.9	143.0	127.3	133.3
2019	127.7	139.6	154.7	136.1	139.5
2020	143.6		132.8		



#### GRAN CANARIA

	Quarter 1	Quarter 2	Quarter 3	Quarter 4	Annual
2006	111.8	104.0	101.7	112.0	107.8
2007	112.1	104.1	109.1	113.7	110.3
2008	115.1	110.4	111.3	122.7	115.4
2009	128.9	115.8	113.2	118.3	119.9
*2010	119.8	124.5	112.4	124.5	120.6
2011	126.3	118.0	113.9	126.8	122.1
2012	126.7	117.0	119.3	136.1	125.9
2013	128.4	120.0	118.2	135.0	126.7
2014	129.7	118.4	119.4	133.2	126.3
2015	132.8	129.6	134.8	141.7	135.3
2016	138.3	124.9	130.6	147.3	136.4
2017	152.7	125.4	133.2	145.6	140.3
2018	136.5	142.0	145.7	149.0	143.2
2019	127.6	141.4	147.5	151.3	141.5
2020	148.5		123.3		



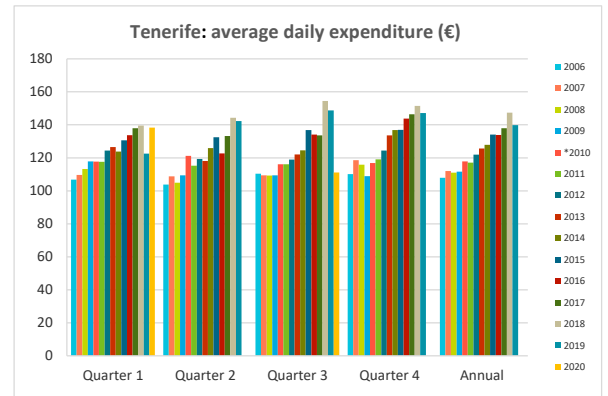
(\*) Linked series since 2010.

# Average daily expenditure

## By island of stay

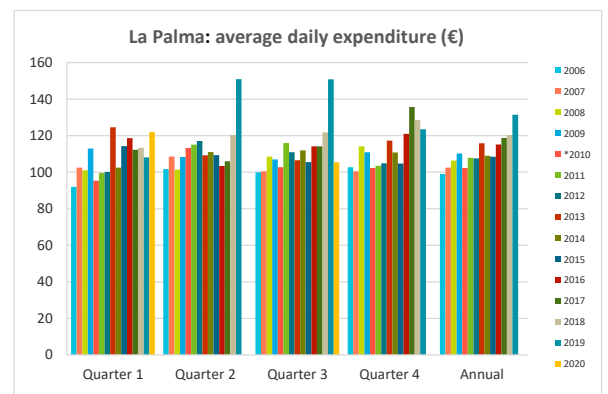
### TENERIFE

	Quarter 1	Quarter 2	Quarter 3	Quarter 4	Annual
2006	106.8	103.8	110.4	110.2	107.9
2007	109.6	108.8	109.4	118.6	112.0
2008	113.2	104.9	109.3	115.8	111.1
2009	117.9	109.4	109.4	108.8	111.7
*2010	117.7	121.2	116.1	116.9	117.8
2011	117.6	115.3	116.1	119.0	117.1
2012	124.4	119.3	118.9	124.4	122.0
2013	126.5	118.1	122.1	133.6	125.6
2014	123.8	125.9	124.6	136.8	127.9
2015	130.6	132.5	136.8	136.9	134.2
2016	133.7	122.7	134.1	143.8	133.8
2017	137.9	133.2	133.6	146.4	138.0
2018	139.6	144.3	154.5	151.4	147.4
2019	122.5	142.3	148.8	147.1	139.8
2020	138.3		111.1		



### LA PALMA

	Quarter 1	Quarter 2	Quarter 3	Quarter 4	Annual
2006	92.0	101.7	100.0	102.8	99.0
2007	102.5	108.6	100.5	100.5	102.5
2008	101.1	101.4	108.6	114.1	106.4
2009	112.9	108.3	107.0	111.0	110.2
*2010	95.4	113.3	102.7	102.3	102.3
2011	99.6	115.0	116.0	103.5	107.9
2012	100.2	117.1	110.9	104.9	107.5
2013	124.5	109.2	106.5	117.3	115.8
2014	102.6	111.0	112.0	110.8	109.0
2015	114.3	109.3	105.5	104.8	108.5
2016	118.6	103.4	114.1	121.0	115.2
2017	112.3	106.0	114.2	135.7	118.8
2018	113.4	120.3	121.7	128.5	120.4
2019	108.2	150.9	150.8	123.5	131.5
2020	122.0		105.4		



(\* Linked series since 2010.

Source: ISTAC (Encuesta sobre el Gasto Turístico).

Note: Tourists under 16 years old are excluded.